

KRS Newsletter

December 24' Issue

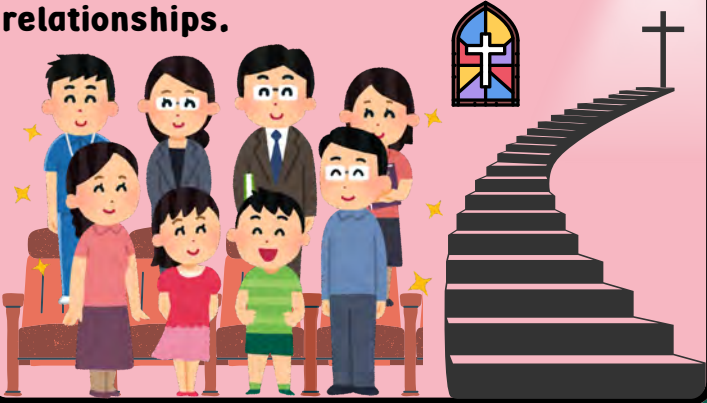
This Month in KRS

7TH DECEMBER 2024



PARENTS-TEACHERS Christian Belief

Our annual Parents-Teachers Christian Belief Day is a wonderful opportunity to connect with people in our community, learn from inspiring speakers, and enjoy fun activities for the whole family. Don't miss this chance to strengthen your spiritual journey and build lasting relationships.



This Month Outside of KRS

CHRISTMAS for everyone



DONATE

There are about 250,000 poor children in Hong Kong, and 50,000 of them are living in sub-divided cubicles in poor conditions. Let us share the joy of Christmas by giving back. Your donation can make a world of difference. Spread love and hope this holiday season!

Santa Project 2024

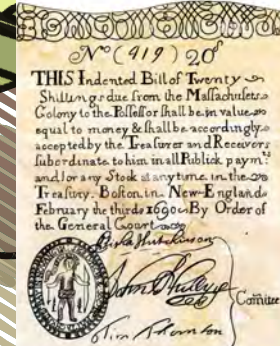
Read more:

<https://soco.org.hk/en/santa-project/>



Today in History

FIRST PAPER MONEY



Over 300 years ago, on 10th December 1690, the first paper currency was introduced due to a shortage of coins. However, it was only a 'receipt' for redemption of 'real money' (coins) later on. With stability in governments came a wider acceptance of paper currency in the 18th century due to its convenience.



Verse of the Month

For He will command His angels concerning you to guard you in all your ways.

-Psalm 91:11-

This Month in Hong Kong



Experience the magic of Christmas in Hong Kong with a visit to the spectacular Christmas Town, featuring a towering Christmas tree and enchanting festive displays. Enjoy the warmest and most wondrous ambience at this delightful time of year with your family.



This Month Outside of Hong Kong

Visit Pottinger Street in Central for costumes and Christmas decor, while Tai Yuen Street in Wan Chai and Sham Shui Po's Fuk Wing Street have a treasure trove of toys suitable for kids and grown-ups alike!



Maui Whale Watching

📍 Maui, Hawaii



Maui, Hawaii is the best place to see humpback whales because it is their natural breeding area. Every year from December to May, around 10,000 humpback whales make their way home.

JOIN KRS NEWSLETTER!

Topic: My CNY
Chinese New Year (CNY)

- E.g. ✿ Something special you ate
- ✿ A relative or friend you reunited with
- ✿ A new place you visited

How to hand in:

- ✿ Write around 50 words OR
- ✿ Draw on paper OR
- ✿ Send a photo to krsnewsletter2023@gmail.com

To Miss Rosanna on / before:

14/2/2025 (D6)

Phonics - Try to Pronounce

nauseous
[ˈnɔːs]

(adj.) - feeling as if you might vomit

The smell of gasoline makes me nauseous.

Idiom of the Month

under a cloud

a person who is not to be trusted or is suspicious of wrongdoing

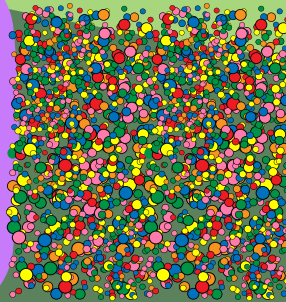
E.g. Joyce has been under a cloud since her classmate's bracelet disappeared.

Vocabulary of the Month

bevy
/ˈbɛvi/

(Noun) - a large group of people or things

E.g. A bevy of students is rushing towards the tuck shop.



Thank you Mum and Dad for bringing us to Thailand last summer!



By: Ally 4L (9)
Lyanna 1L (7)

Meet Nosy!

She is a 17 years old long-haired Chihuahua, and my best pet friend.

Nosy got her name from sniffing everywhere and being curious about everything! She has two big sparkly eyes, a small nose and a tongue that always sticks out.

Nosy walks very slowly now because she's 86 years old in human age. Sometimes she has difficulties standing up. But she eats quickly! She crunches her food loudly and flicks her tail vigorously as if she's saying "thank you". Thank you, Nosy, for

By: Charlotte 5F (2) bringing me so much joy, comfort and fun.



Dear Miss Wong,

I'm glad you are teaching me Chinese this year. I have been waiting for 4 years for you to be our class teacher. In the morning, you always play chess with us to relax. In Chinese lessons, you often bring a doll and tell us jokes. At lunchtime, you always sing songs and play music for us. From this day on, I will do more Chinese exercises to get better scores. You are a friendly, kind, a little mad class, Chinese, and a super teacher.

By: Caspar 5C (4)



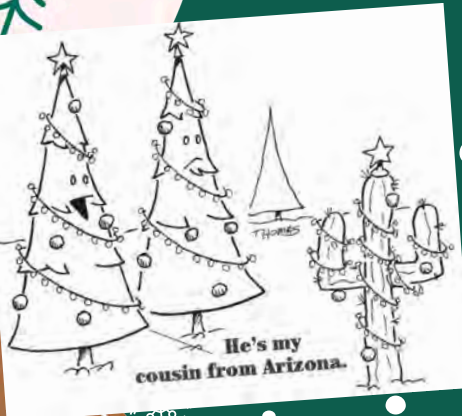
By: Charmaine 6C (19)





By: Natalie 6C (20)

I'm grateful for having a healthy environment, a nice school to grow up in, and my friends being around. There are many things in my daily life that others don't have. We must appreciate the mere fact that we are blessed with fresh food, good education, and more.



Thank you, Winki, for being my friend. When our families visit Thailand in December, I want to buy you something you like. I hope some more friends can join us!

By: Jade 3H (18)

Dear Miss Rosanna, I am very thankful that you give me things to do when I feel bored. You always keep me companied!

By: Hailey 4L (2)



And he is always the first one to give me a big hug when I come home from school.

I enjoy every moment with my little brother.

I'm Grateful for my little brother who is just three 3 years old. He always shares ice cream and chocolate with me.



By: Anna 5F (16)



I am grateful for my Principal and teachers. Mrs. So organizes many outdoor activities. On our G.S. outing day, we interviewed some people about their homes. It is enjoyable! She also gave us a loving school with caring teachers. I always miss my school days on holidays.

By: Charlotte 3F (12)

1. What's Your Elf Name?

FIRST LETTER OF YOUR ENGLISH NAME

| | |
|--------------|----------------|
| A = Jolly | N = Sugar Plum |
| B = Cheerful | O = Honey Bun |
| C = Buddy | P = Peppermint |
| D = Happy | Q = Cinnamon |
| E = Glittery | R = Ginger |
| F = Sparkle | S = Pixie |
| G = Cookie | T = Blinky |
| H = Candy | U = Tinker |
| I = Tinsel | V = Snowy |
| J = Frosty | W = Starlight |
| K = Merry | X = Evergreen |
| L = Tootsie | Y = Fruity |
| M = Peaches | Z = Cocoa |

YOUR BIRTH MONTH

| |
|--------------------------|
| January = Candy Cane |
| February = Sparkly Toes |
| March = Dancing Hat |
| April = Mc Jingles |
| May = Blueberry |
| June = Shortcake |
| July = Peppermints |
| August = Sweet Pickles |
| September = Sleigh Bells |
| October = Sugar Socks |
| November = Pom Pom |
| December = Holy Santa |

2. Elf on the Shelf

Elf hunt! How many elves can you find in this month's newsletter? P.S. They come in all colours and sizes. Look! There's one at the top right side of the shelf!

ANSWER: 20 ELVES

3.

Spot 3 Differences

What do you call an old snowman?

water

What happened to the thief who stole a Christmas calendar?

He got 12 months.

What do you call Santa when he stops moving?

Santa Pause

What do you get when you cross a Christmas tree with an apple?

a pineapple

Where does Santa keep all his money?

at the local snow bank

SPECIAL

Only for Christmas!

**Print out a copy from
e-class and use it as
a Christmas card
envelope!**

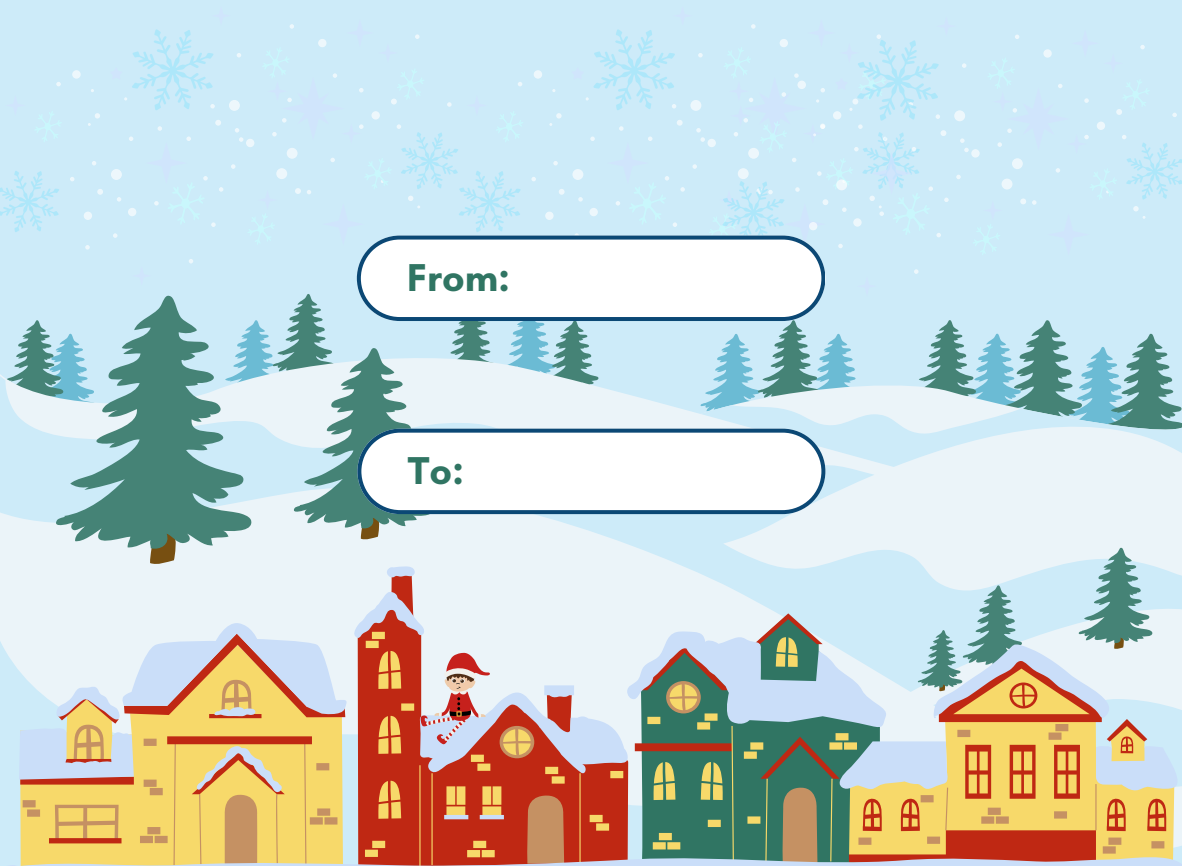


PUT GLUE HERE

From:

To:

PUT GLUE HERE



CUT THE BROKEN LINES USING SCISSORS

Season



TIS

